

ABSTRACT

Animal traces are unstable entities that scientists and practitioners have historically examined in different ways across multiple fields. This exploratory workshop is a space for scholars and practitioners in the humanities and sciences to discuss methodological, technical, political, and ethical challenges and responsibilities that come with endeavors of “reading animal materials,” that is, visualizing, analyzing, and characterizing objects derived from animal bodies. Through multi-disciplinary discussion bridging archaeologists, museum conservators, and historians, we strive to deepen our mutual understandings of how animal materials are studied and cared for as historical objects.

We will explore the following questions throughout the workshop

1. What are the processes, issues, and challenges involved in accessing and working with animal materials in various disciplines?
2. How do existing methods of analyzing animal materials shape distinct spheres of comprehension in and across the sciences, history, and history of science?
3. How do power, responsibilities, economic structures, etc., inform the choices that analysts make about their study subjects and objects? How do these limit or expand what can be knowable about particular animals, human cultures, and practices?

This workshop is envisioned as a pluralist environment for the exchange of ideas focused on a series of roundtable discussions and presentations.



"Surgical gut suture (Plain and Chromic)" by Armin, Public Domain.

On Cover

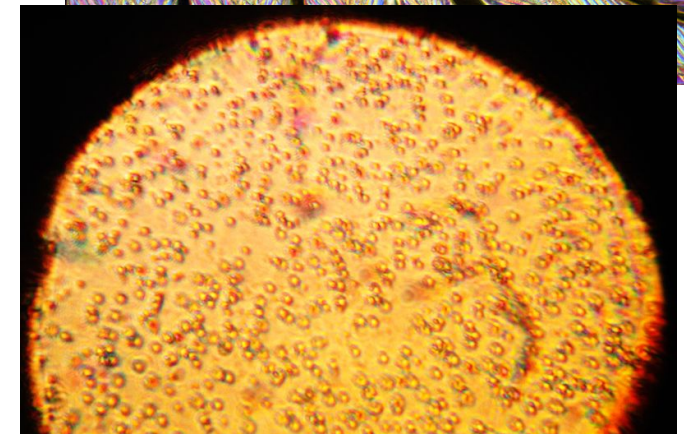
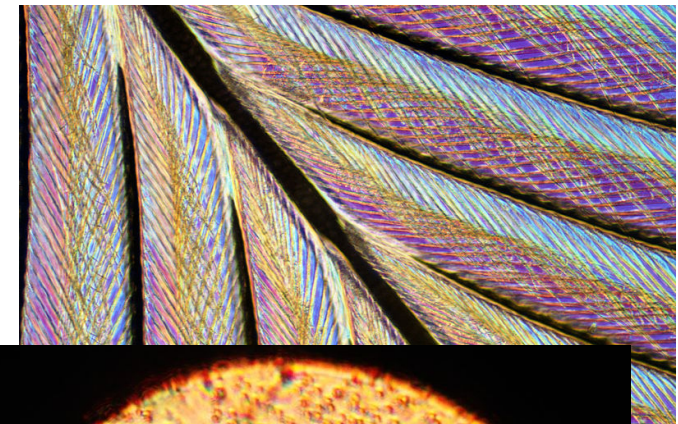
Top: "Bird feather" by Josef Reischig, CC-BY-SA 3.0.
Bottom: Sample of breast milk viewed by a light microscope at at 300x magnification by Amangeldyurazov, CC BY-SA 4.0.

WORKSHOP

Reading Animal Materials

ORGANIZED BY

LISA ONAGA AND ISABELA DORNELAS



NOV 29–DEC 2, 2022

HARNACK-HAUS, LYNNEN ROOM

TUESDAY, 29 NOV

- 15:30–15:45 Registration
- 16:00–17:15 Flash Introductions from Participants
All Participants
- 18:00 **INFORMAL DINNER**

WEDNESDAY, 30 NOV

- 9:30–9:45 Warm-up
- 9:45–10:30 Breakout Session 1
(30 min. + 15 min. group)
- 10:30–11:00 **COFFEE BREAK**
- 11:00–12:00 Breakout Session 2
(30 min. + 30 min.)
- 12:00–13:00 **LUNCH**
- 13:00–15:00 Roundtable 1
- 15:00–15:30 **COFFEE BREAK**

Research Presentation
Isabela Dornelas

THURSDAY, 1 DEC

- 10:00–12:00 Roundtable 2
- 12:00–13:00 **LUNCH**
- 13:00–14:00 Research Presentation
Erin A. Freedman
- 14:00–14:15 **COFFEE BREAK**
- 14:15–15:00 Excursion to Museum
Walking together from Harnack House
- 18:00 **INFORMAL DINNER**

FRIDAY, 2 DEC

- 9:30–11:30 Roundtable 3
- 11:30–12:30 Wrap-up



Collage of different materials. Left: Lisa Onaga, "Anami Ōshima Tsumugi Weaving." Right, front to back: Lisa Onaga, "Braided Silk Surgical Suture"; parchment (Collins); John Sullivan, "Mozzarella Cheese." <http://pdphoto.org/PictureDetail.php?mat=pdef&pg=8553>.

LIST OF PARTICIPANTS

- Amanda Crompton**
St. Mary's University / Memorial University
- Birgit Kantenbach**
Ethnologisches Museum (Humboldt Forum)
- Ellan Spero**
MIT
- Ellen Pearlstein**
UCLA
- Erin Freedman**
Harvard University
- Isabela Dornelas**
MPIWG
- Melanie Korn**
Ethnologisches Museum (Humboldt Forum)
- Laurence Douny**
Matters of Activity
- Lisa Onaga**
MPIWG
- Luis Campos**
Rice University
- Madhu Narayanan**
MPIWG
- Miles Powell**
Nanyang Technological University
- Noel Amano**
MPI for Geoanthropology
- Renée Riedler**
Weltmuseum Wien
- Soraya de Chadarevian**
UCLA
- Taylor Hermes**
MPI for Evolutionary Anthropology